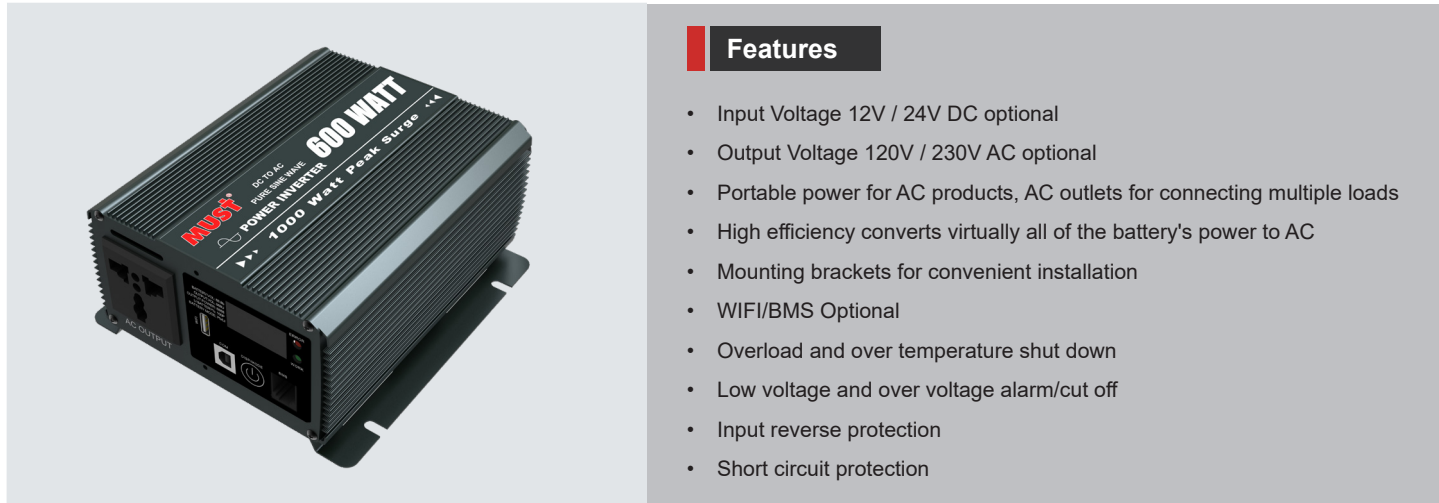


Pure Sine Wave Inverter PI1500 Series (600W)



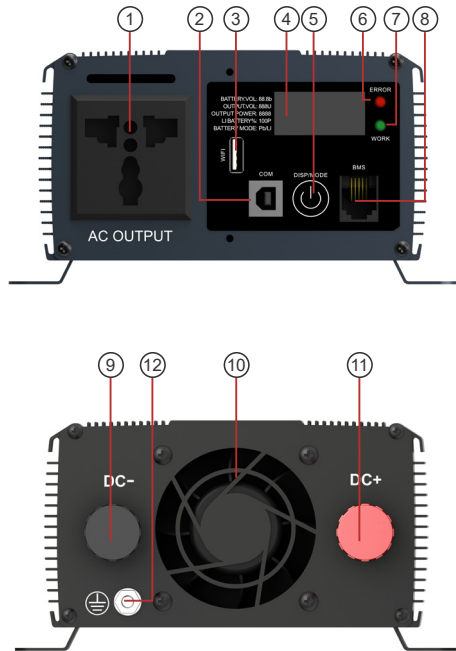
Features

- Input Voltage 12V / 24V DC optional
- Output Voltage 120V / 230V AC optional
- Portable power for AC products, AC outlets for connecting multiple loads
- High efficiency converts virtually all of the battery's power to AC
- Mounting brackets for convenient installation
- WIFI/BMS Optional
- Overload and over temperature shut down
- Low voltage and over voltage alarm/cut off
- Input reverse protection
- Short circuit protection

Introduction

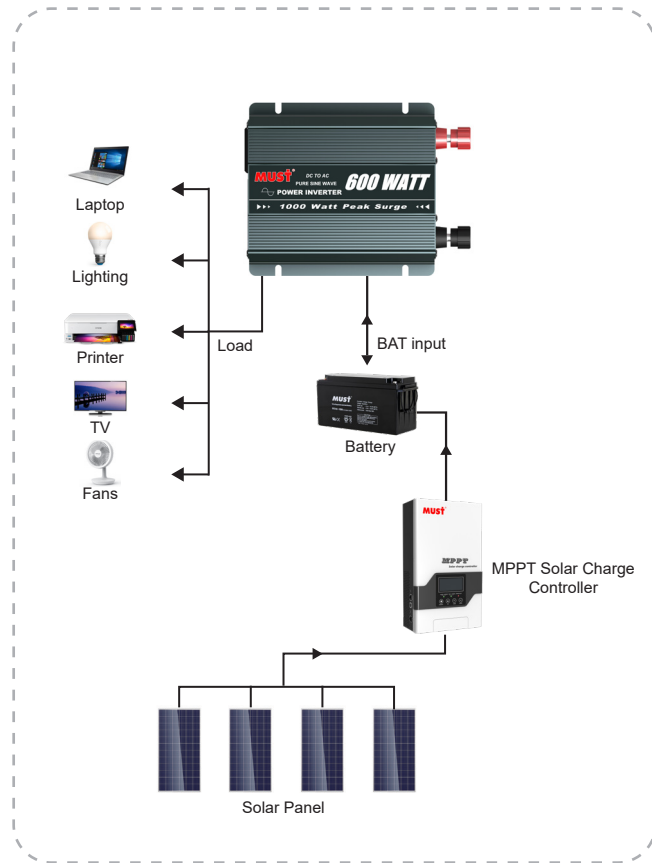
PI15 series is a pure sine wave inverter, high frequency machine solution, the product is small size, the solution is reliable and stable, the main function is to invert the DC 12VDC battery or 24VDC battery to AC 230VAC or AC 120VAC output, mainly used for emergency use Electricity, car inverter, outdoor electricity and other occasions.

Back panel printing description



- | | |
|-----------------------|---------------------|
| 1. AC Output | 7. Error Red LED |
| 2. Communication port | 8. BMS port |
| 3. USB WIFI | 9. Battery Input - |
| 4. LED Screen | 10. Fan |
| 5. Power Switch | 11. Battery Input + |
| 6. OK Green LED | 12. Ground |

Solar system connection



Specification

MODEL		PI15-0612	PI15-0612LV	PI15-0624	PI15-0624LV
Battery DC Input	Input Voltage	12VDC		24VDC	
	Low Voltage Protect Delay	2 seconds			
	Low Voltage Protect	10.5VDC(PB)	11.6VDC(LI)	21.0VDC(PB)	23.2VDC(LI)
	Low Voltage Warning	11.5VDC(PB)	12.0VDC(LI)	23.0VDC(PB)	24.0VDC(LI)
	Low Voltage Restoring	12.5VDC(PB)	12.8VDC(LI)	25.0VDC(PB)	25.6VDC(LI)
	Over Voltage Restoring	14.7VDC(PB)	14.5VDC(LI)	29.4VDC(PB)	29.0VDC(LI)
	Over Voltage Protect	15.0VDC(PB)	14.8VDC(LI)	30.0VDC(PB)	29.6VDC(LI)
	Note: Parameters (PB) Lead-acid Battery / (LI) LiFePO4 Lithium Battery Pack-12V(4 Series) 24V(8 Series)				
Inverter AC Output	Default Power	600W			
	Peak Power	1200W			
	Output AC Voltage	230V	120V	230V	120V
	Output AC Frequency	50Hz	60Hz	50Hz	60Hz
	Output Wave	Pure Sine Wave			
	Output Wave THD	< 3%			
USB	USB Output	USB A type - 5V 1.5A			
Protection	Battery Input Protection	Low Voltage Protection, Over Voltage Protection, Reverse Protection			
	Inverter Output Protection	Output Overload, Short-Circuit, Over Temperature Protection			
Display	LED Display	Red: Error ; Green: System OK			
	LED Digital Display	Display Battery Voltage, Output Power, Output Voltage, Error Numbers			
Communication	PC(Default)	USB B type Socket			
	WIFI(Optional)	USB A type Socket			
	BMS to Li Battery(Optional)	RJ11 type Socket			
Efficiency	Peak Conversion efficiency	91%			
Environment	Protection Degree	IP20			
	Working Environment	Indoor Fan cooling			
	Environmental temperature	0~45°C			
	Ambient humidity	20%~90%, No condensation			
Dimensions	Altitude	≤3000m			
	Machine Dimension (W*H*D)	/			
	Package Dimension (W*H*D)	/			
	G.W	/			
N.W	/				