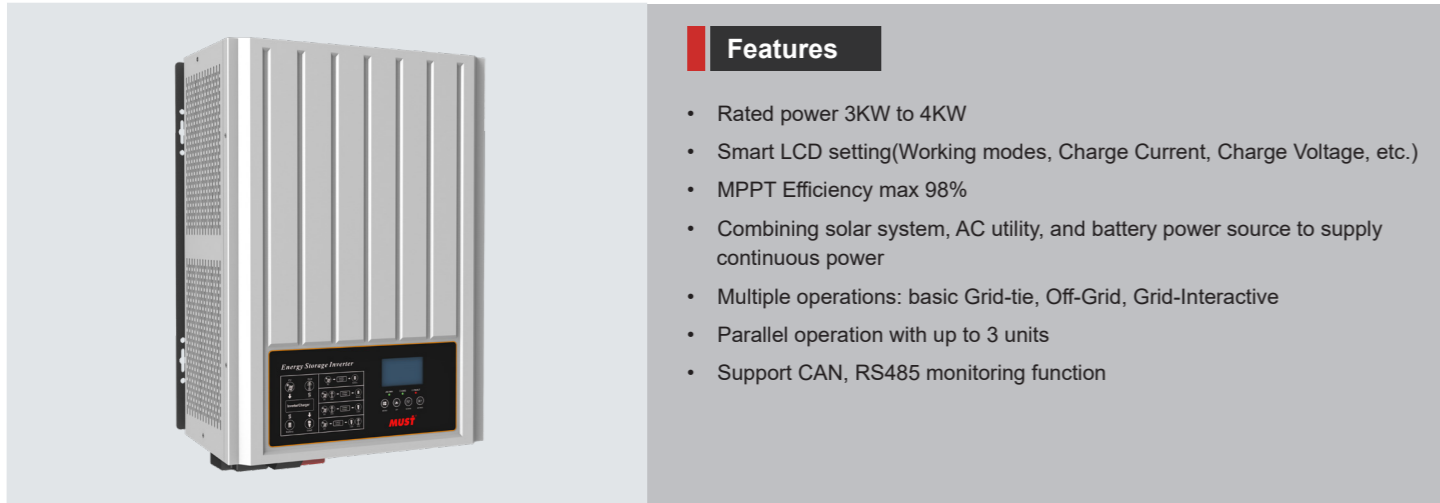


Low Frequency On/Off Grid Hybrid Solar Inverter

PH3000 Series (3KW-4KW)



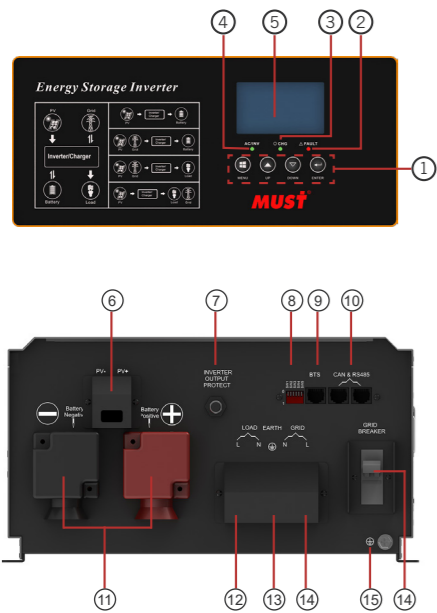
Features

- Rated power 3KW to 4KW
- Smart LCD setting(Working modes, Charge Current, Charge Voltage, etc.)
- MPPT Efficiency max 98%
- Combining solar system, AC utility, and battery power source to supply continuous power
- Multiple operations: basic Grid-tie, Off-Grid, Grid-Interactive
- Parallel operation with up to 3 units
- Support CAN, RS485 monitoring function

Introduction

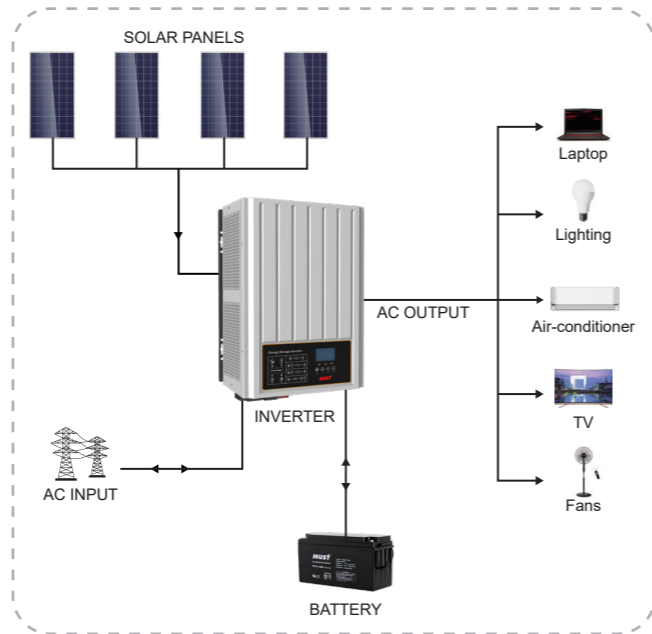
PH3000 series Energy Storage Inverter has capacity of 3KW and 4KW, it is multi-functional, combining functions of inverter, On-Grid, MPPT solar charger and battery charger to offer uninterruptible power support with portable size. Its comprehensive LCD display offers user-configurable and easy-accessible button operation such as battery charging current, AC/solar charger priority, and acceptable input voltage based on different applications.

Back panel printing description



- | | |
|----------------------------|----------------------------------|
| 1. Function Buttons | 9. BTS |
| 2. Fault Indicator | 10. CAN&RS485 communication port |
| 3. Charging Indicator | 11. Battery input |
| 4. Status Indicator | 12. Load |
| 5. LCD Display | 13. Earth |
| 6. PV input | 14. Grid |
| 7. Inverter output protect | 15. Earth |
| 8. Switch | |

Solar system connection



Specification

| MODEL | PH30-3048 | PH30-4048 | |
|--|--|---|---------------|
| Nominal Battery System Voltage | 48VDC | | |
| INVERTER OUTPUT | Rated capacity | 3750VA | 5000VA |
| | Rated output power | 3000W | 4000W |
| | Rated output voltage and frequency | 230Vac / 50Hz or 60Hz | |
| | Rated output current | 13A | 17.4A |
| | Output voltage precision | 230Vac ± 1% | |
| | Output frequency precision | 50Hz ± 0.1% | |
| | THD (Linvar loads) | Off grid ≤ 2% | |
| | | Grid discharge ≤ 3% | |
| | | Grid charge ≤ 3% | |
| | Dynamic response speed | 20ms | |
| Power factor | Grid discharge 99.9% & Grid charge 99.9% | | |
| Overload capability | 30 minutes @ 100%<load≤110% | | |
| | 1 minutes @ 100%<load≤125% | | |
| | 30 seconds @ 125%<load≤150% | | |
| | 10 seconds @ 150%<load≤200% | | |
| | 5 seconds @ load>200% | | |
| Grid / Off grid change time | 5 seconds @ short circuit | | |
| | < 10ms | | |
| Output wave | Sine wave | | |
| Inverting efficiency 80% resistive loads | ≥93% | ≥93% | |
| AC INPUT | AC input maximum current | 26A | 34.8A |
| | Acceptable input voltage range | Defaults 186Vac ~253Vac; Narrow 174Vac ~272Vac; Wide 95Vac ~272Vac | |
| | AC Input frequency | 47.5Hz ~ 51.5Hz | |
| BATTERY | Rated input voltage | 48VDC | |
| | Allowed input DC voltage range | 40VDC~62VDC | |
| | Low voltage alarm | 42VDC | |
| SOLAR CHARGER & AC CHARGER | High voltage alarm | 60VDC | |
| | PV Open Circuit Voltage | 145VDC | |
| DISPLAY & PROTECTION FUNCTION | Max Solar Charging Current | 60A | 60A |
| | Max AC Charging Current | 60A | 80A |
| MECHANICAL SPECIFICATIONS | LED indication | Systematic operation, indication of charge and discharge, indication of fault | |
| | LCD display | output voltage, output current, grid voltage, grid current, voltage of storage battery, load power, chart of capacity | |
| | Protection Function | Input LV protection | |
| | | Input OV protection | |
| Output overload protection | | | |
| OTHER | Output short circuit Protection | | |
| | Mounting | Wall mounted | |
| | Machine Dimension (W*H*D) | 337*462*183mm | 370*462*183 |
| | Package Dimension (W*H*D) | 476*602*325mm | 476*602*325mm |
| | G.W | 29.5kg | 35kg |
| | N.W | 33kg | 38.5kg |
| OTHER | Communication terminal | RS485 / CAN bus | |
| | Operation Temperature Range | 0°C~ +50°C | |
| | Environmental Protection Rating | Indoor(IP20) | |
| | Ambient humidity | 0~90% relative humidity (non-condensing) | |
| | Altitude | ≤3000m | |